

Payment Information

Make checks payable to: NAMI Arizona

Mail complete form to:

NAMI ARIZONA

5025 E. Washington St., Suite # 112

Phoenix, AZ 85034

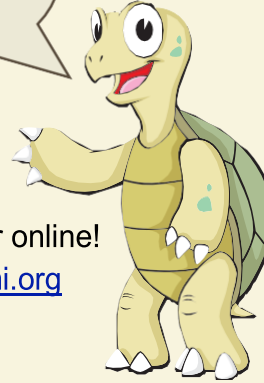
Local Affiliates -Your membership includes association with a local affiliate.

Please indicate below which local affiliate you would like to join.

- NAMI Flagstaff
- NAMI Sedona
- NAMI Yavapai County
- NAMI Pinal Central
- NAMI Valley of the Sun (Maricopa County)
- NAMI of Southern Arizona (Pima County)
- NAMI Southeast Arizona (Cochise, Graham, Greenlee, Santa Cruz Counties)
- NAMI Payson
- NAMI Yuma
- NAMI Havasu (In Development)
- NAMI White Mountains (In Development)

Don't Delay!

Join Today!



Become a member online!

Go to: www.nami.org

To contact NAMI Arizona,

Please call NAMI Arizona member and Information & Resources Coordinator, Andy Arnowitz, at 480-994-4407.

NAMI Arizona address:

5025 E. Washington Street,
Suite #112,
Phoenix, AZ 85034



MEMBERSHIP GUIDE

Arizona's Voice ON MENTAL ILLNESS

800-626-5022
www.namiaz.org
www.nami.org

Our Mission...

EDUCATION

NAMI's Signature Education Programs are offered throughout the State. We believe that education is an integral part of recovery.

Our courses cover key aspects of mental illness: from the science behind how medications work to developing coping and resiliency strategies. All courses are taught by our members. Family members teaching family members and Peers teaching Peers!

SUPPORT

NAMI Arizona offers unique, structured, support groups focused on providing coping skills and problem solving through group processes.

ADVOCACY

NAMI Arizona is dedicated to improving care and eliminating stigma for those living with a mental illness.

We believe in coordinated care that is community based, promotes recovery and resiliency, fosters empowerment and provides choice.



THE BENEFITS OF MEMBERSHIP



When you join NAMI Arizona...

You join a national network of individuals whose lives have been touched by mental illness. This network provides the help and hope so many need. Membership benefits include:

- Membership at the national, state and local levels.
- Newsletters from NAMI National, NAMI Arizona, and your local affiliate
- The opportunity to participate on special interest councils and action groups.
- Access to the statewide Mental Illness Resource Hotline.
- Access to national and local networks of support.
- Invitations to local educational and networking events.
- The knowledge that you are playing an integral part in busting stigma and advancing science and treatment.

Become a member securely online at
www.nami.org

Make Me a Member!

Includes membership with a local affiliate and at the State and National levels.

- Individual Membership - \$40.00
- Household Membership - \$60.00 (For a family of individuals living in one household that is counted as one for the purpose of paying dues and voting.)
- Open Door/Low Income - \$5.00

I would like to make a tax-deductible contribution of \$ _____ to further the goals of NAMI Arizona.

Total: _____

Name: _____

Additional Names in Household: _____

Address: _____

City: _____

State: _____ Zip: _____

Phone: _____

EMAIL: _____